



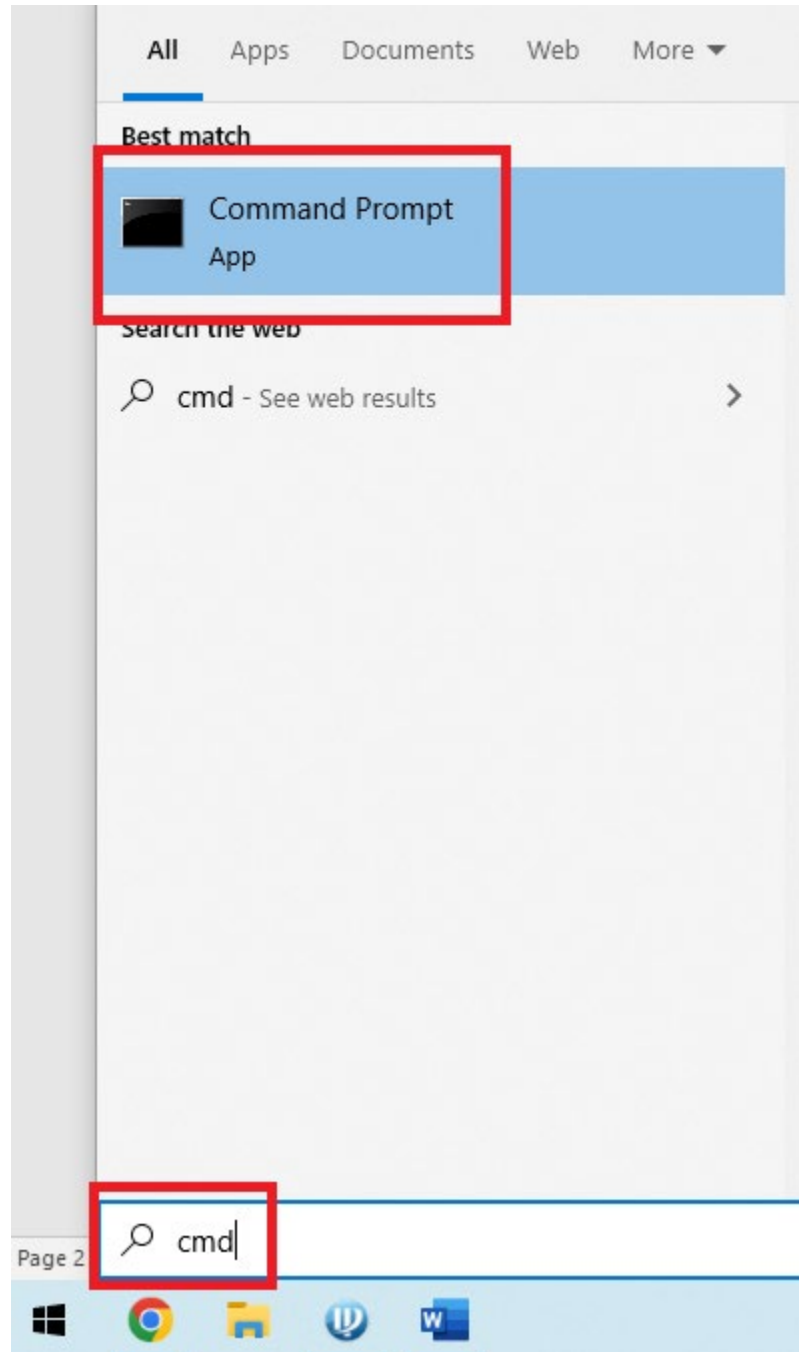
SET UP GUIDE:

IP4MIAB -28 – SDA






1. Open your Command Prompt by opening up the “**Start**” menu and type “**cmd**” and select “Command Prompt”:





2. Type in the command **ipconfig** like this:

```
Command Prompt
Microsoft Windows [Version 10.0.19042.1706]
(c) Microsoft Corporation. All rights reserved.
C:\Users\danie>ipconfig
```



3. Your IP Address will be displayed under “**IPv4 Address**”:

```
Command Prompt
Microsoft Windows [Version 10.0.19042.1706]
(c) Microsoft Corporation. All rights reserved.
C:\Users\danie>ipconfig

Windows IP Configuration

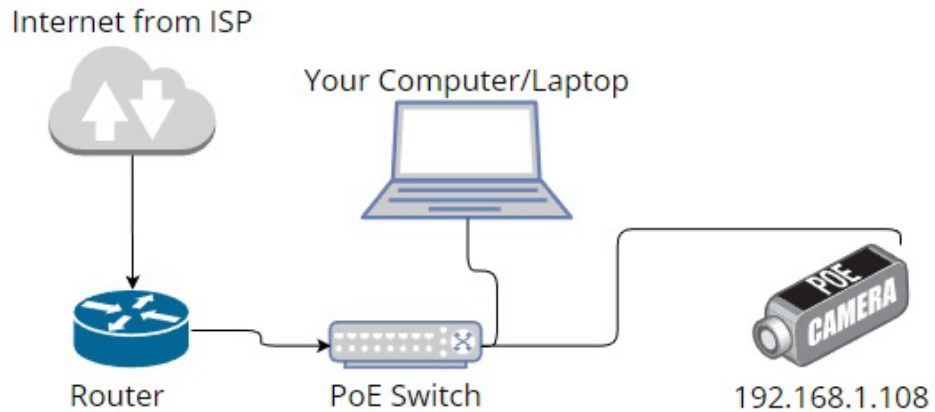
Ethernet adapter Ethernet:

    Connection-specific DNS Suffix  . : 
    Link-local IPv6 Address . . . . . : fe80::5d0:2a6a:72f2:8a24%10
    IPv4 Address. . . . . : 192.168.1.231
    Subnet Mask . . . . . : 255.255.255.0
    Default Gateway . . . . . : 192.168.1.1

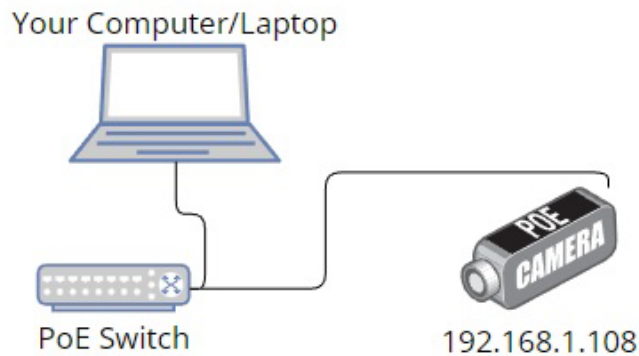
C:\Users\danie>
```

4. If your IP Address is between **192.168.1.2 – 192.168.1.254** you will use **Example 1** in the guide below. If your address is not within the **192.168.1.2 – 192.168.1.254** subnet, or your IP address is currently **192.168.1.108** you will need to use **Example 2** in the guide below before moving on with the setup process.

EXAMPLE 1: NORMAL SET UP

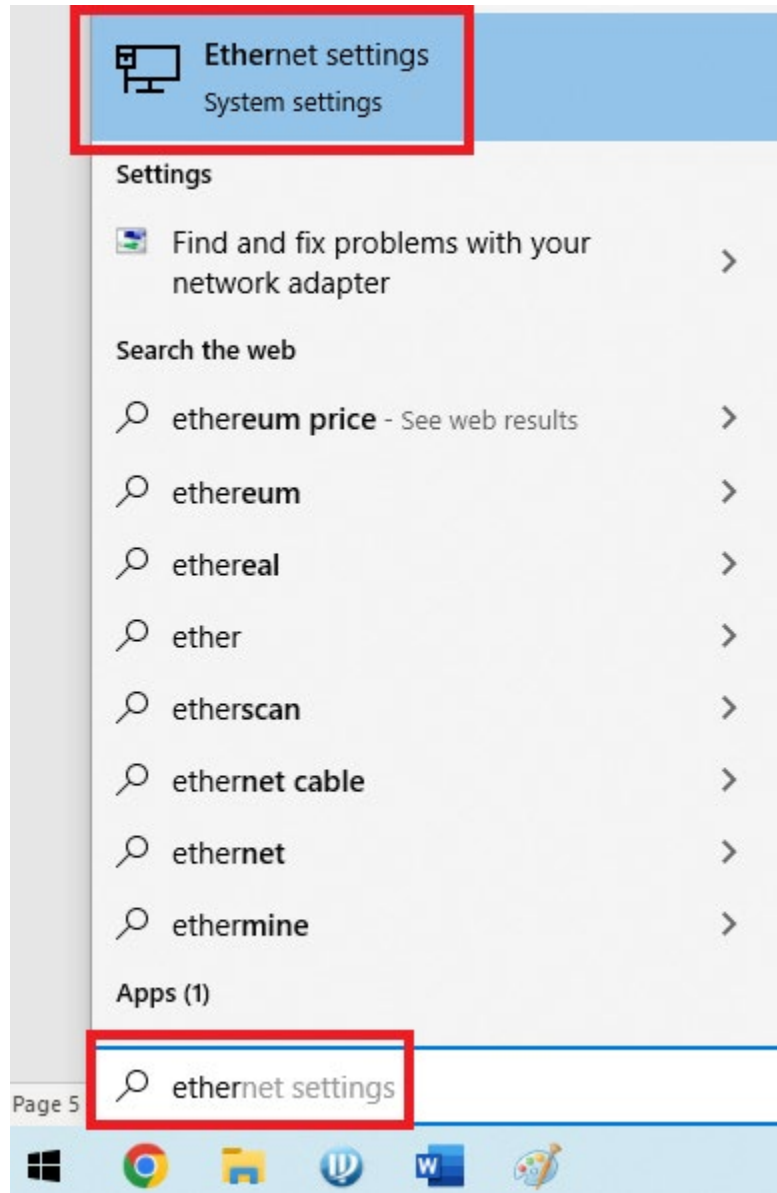


EXAMPLE 2: OUT OF SUBNET SET UP

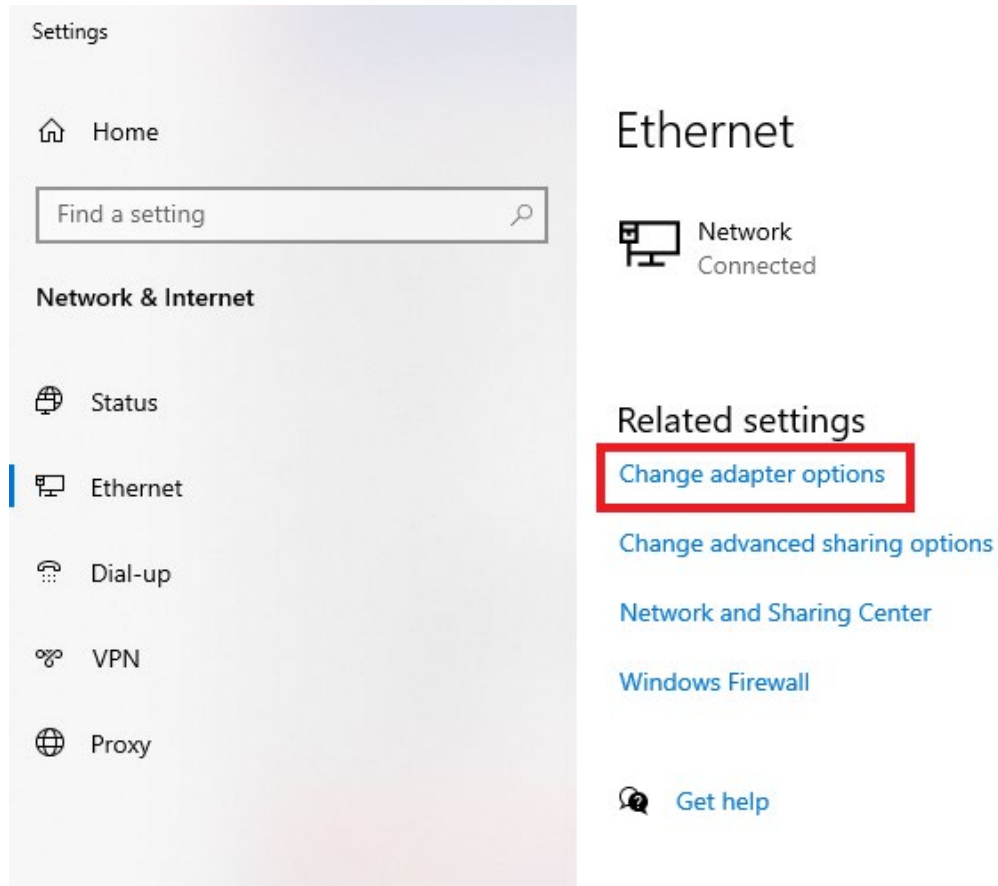




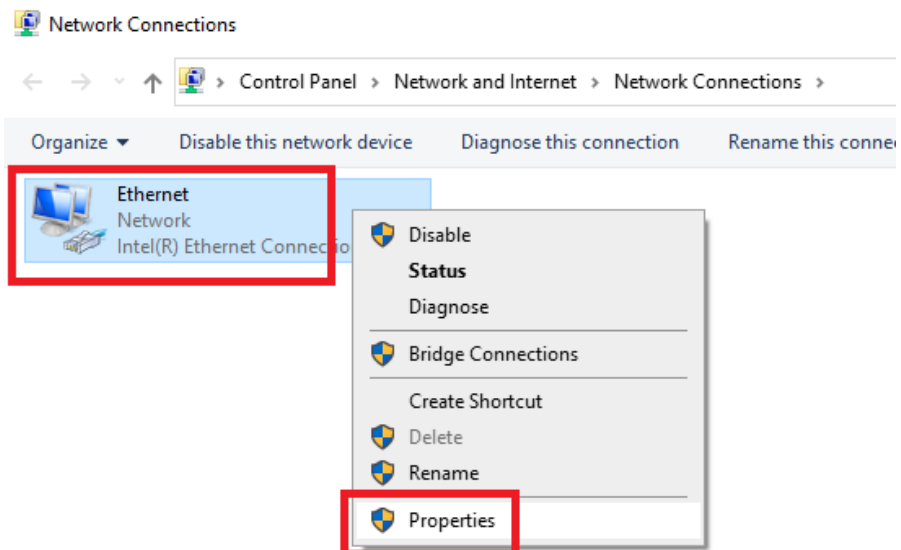
5. If your IP Address is between **192.168.1.2 – 192.168.1.254**, and **not 192.168.1.108**, move on the **Step 13**. If not, move to **Step 6**.
6. Once you have configured your devices as shown in Example 2, click the “Start” menu and type “**Ethernet**” and click “**Ethernet Settings**”:



7. Click **“Change Adapter Options”**:

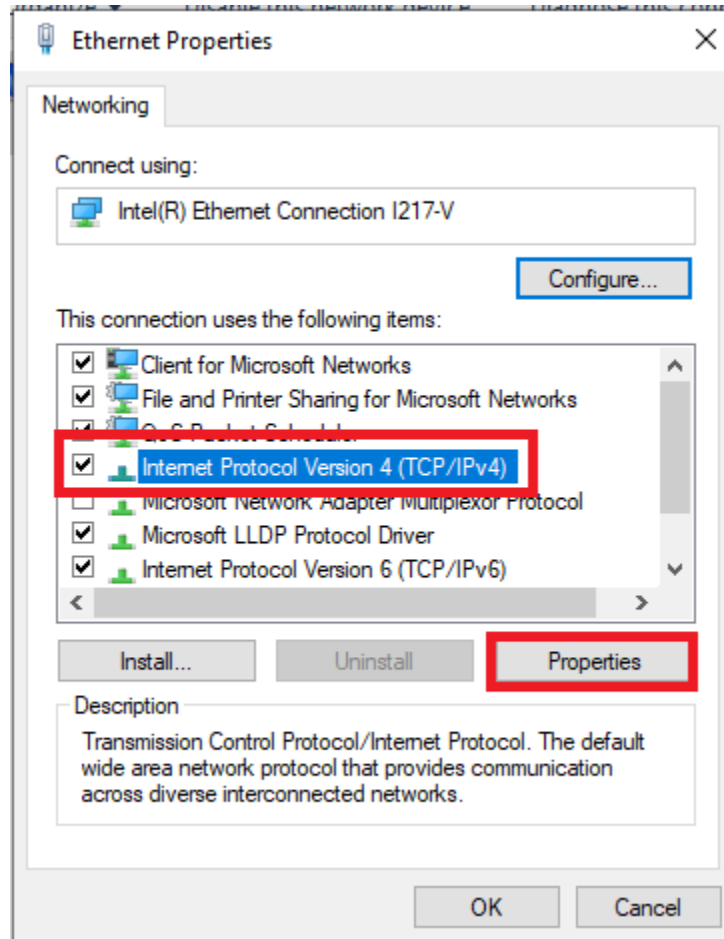


8. Right-click on your ethernet adapter and click **“Properties”**





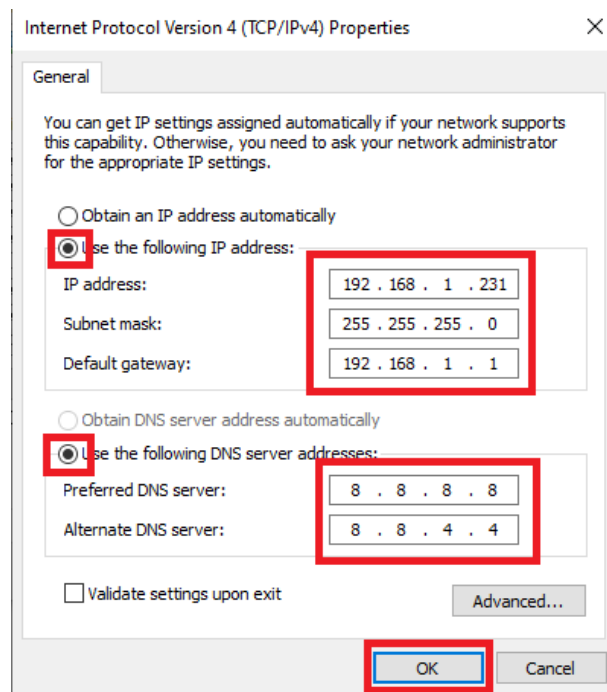
9. Select **Internet Protocol Version 4 (TCP/IPv4)** and click “**Properties**”:





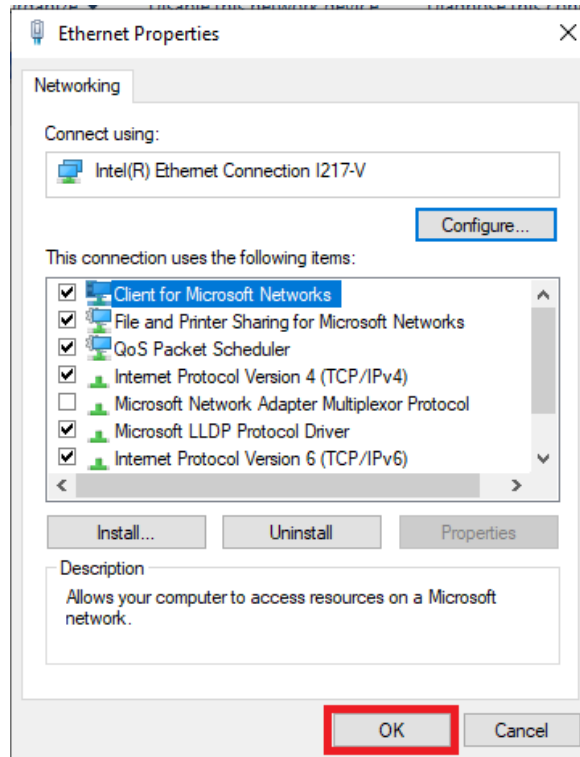
10. Change your IP Address to something within the range of **192.168.1.2 – 192.168.1.254** and set your default gateway as **192.168.1.1**. You can also set your Primary and Alternate DNS settings to 8.8.8.8 for Primary and 8.8.4.4 for Alternate as seen in the screenshot below. Once you are done, click “**OK**”:

IMPORTANT: Do **NOT** set your IP address to **192.168.1.108** because that is the default IP address as the camera. We need a different IP address than the camera to connect to it:





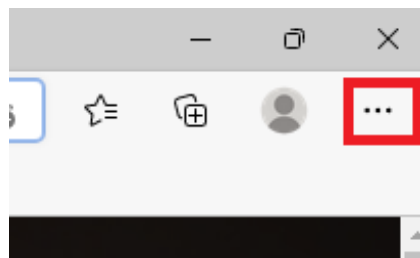
11. Click “**OK**” at the next screen as well:



12. Your new IP Address is now set and you are now on the same subnet as the IP4MIAB -28 – SDA.

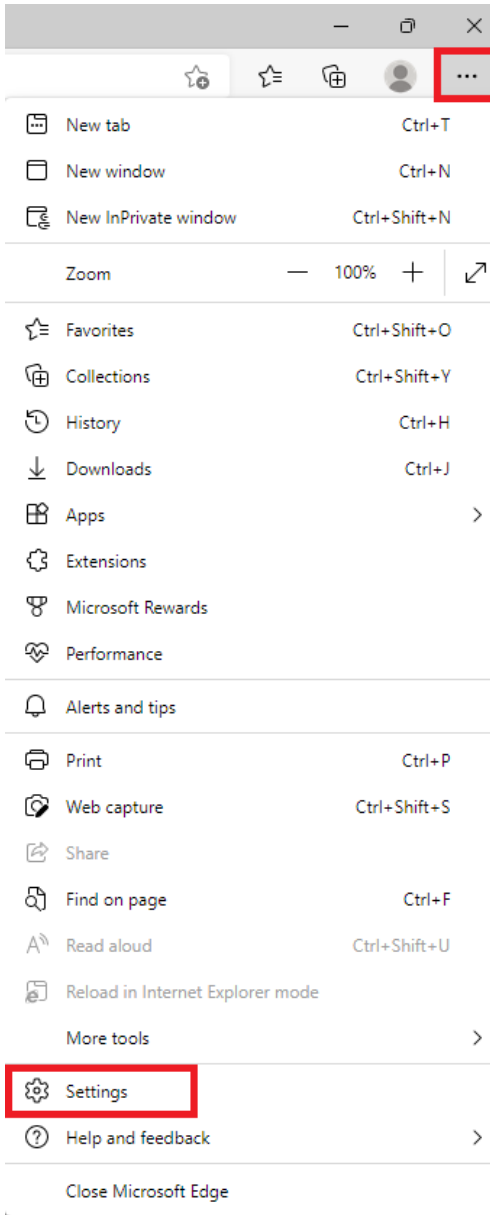
13. Currently, the best browser for viewing any IP cameras is **Microsoft Edge** using the Internet Explorer emulation which you will now quickly set up with the next few steps.

Open Microsoft Edge click the 3 dots for the settings menu in the top right corner below the “X”:



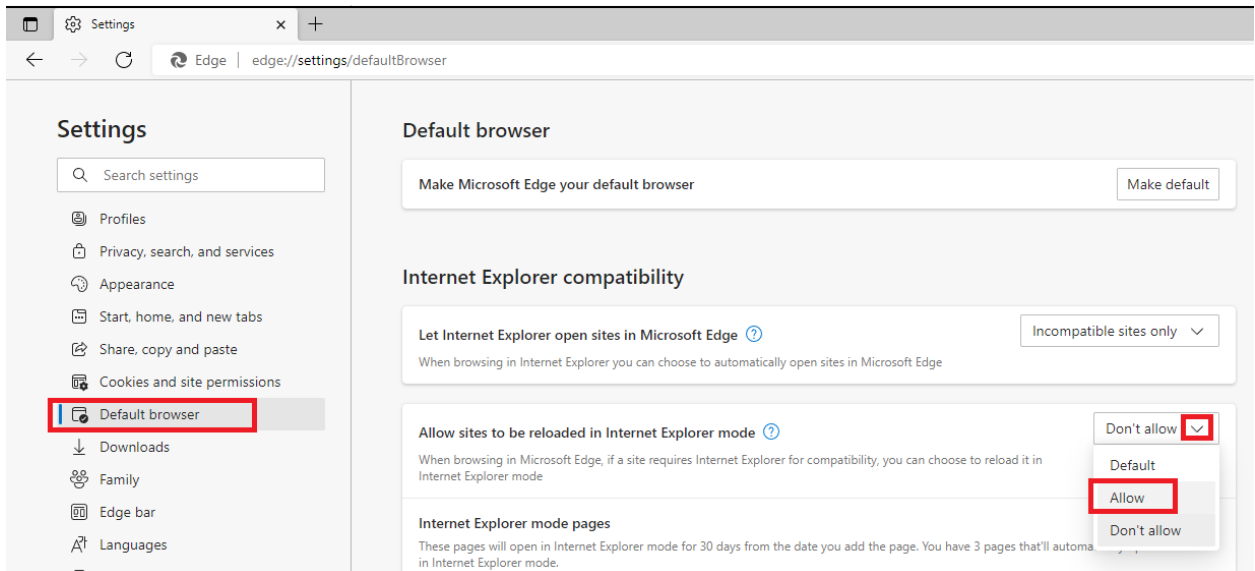


14. Click **Settings**:

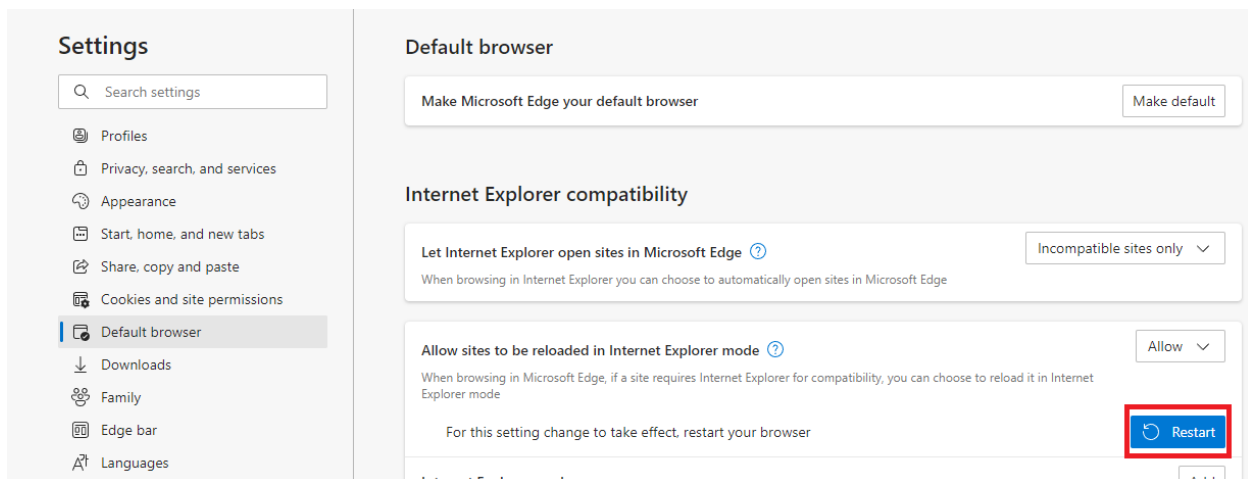




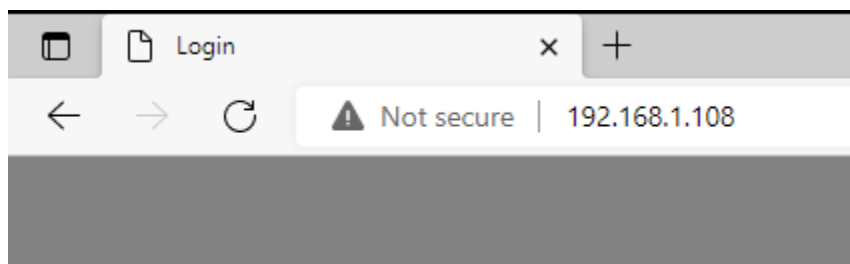
15. Select “**Default Browser**” on the left and click the dropdown menu for “**Allow sites to be reloaded in Internet Explorer mode**”:



16. Click “**Restart**”:

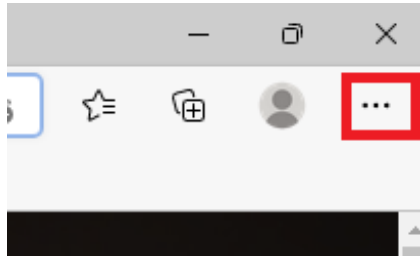


17. Type **192.168.1.108** into the **Microsoft Edge** browser window as this is the default IP address for the IP4MIAB -28 – SDA camera:

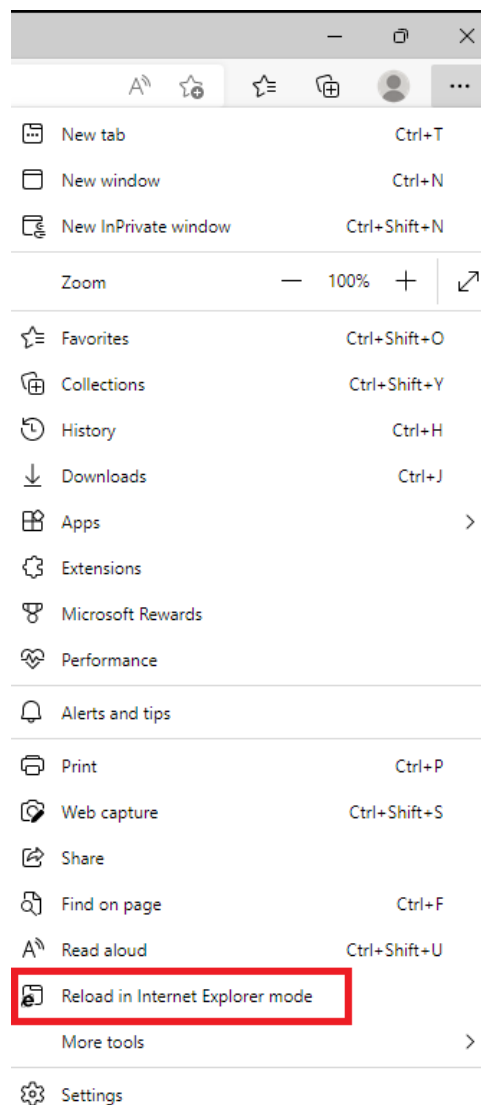




18. Before setting up the camera, click the 3 dots in the top right corner of the **Edge** browser that you clicked in **Step 14**:

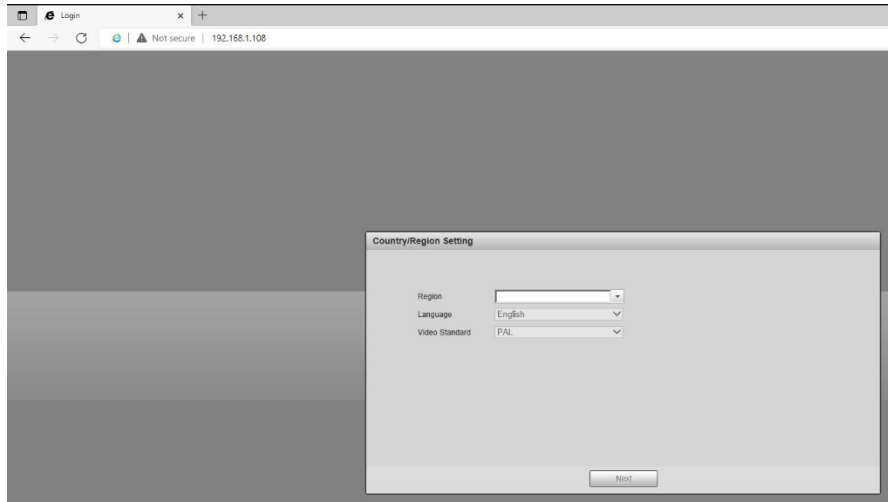


19. This time, select “**Reload in Internet Explorer Mode**”:





20. You can now start setting up the camera which will include basic region, date/time and password settings:



21. Once you are done you will be brought to the login screen for the camera and need to type in the password you just set. Your username will be **admin**





22. Congrats! Your IP4MIAB-28-SDA camera is now set up and ready for use:

