



Channel	Motion	Video Loss	Tampering	Record Status	Record Mode	Resolution	Frame Rate	Bit Rate(K)
1	●	⚠	●	■	Manual	960*576	25	95
2	●	⚠	●	■	Regular	960*576	25	23
3	●	⚠	●	■	Regular	960*576	25	95
4	●	⚠	●	■	Regular	960*576	25	69
5	●	⚠	●	■	Regular	960*576	25	23
6	●	⚠	●	■	Regular	960*576	25	70
7	●	⚠	●	■	Regular	960*576	25	68
8	●	⚠	●	■	Regular	960*576	25	70
9	●	⚠	●	■	Regular	960*576	25	70
10	●	⚠	●	■	Regular	960*576	25	120
11	●	⚠	●	■	Regular	960*576	25	69
12	●	⚠	●	■	Regular	960*576	25	71
13	●	⚠	●	■	Regular	960*576	25	71
14	●	⚠	●	■	Regular	960*576	25	70
15	●	⚠	●	■	Regular	960*576	25	70
16	●	⚠	●	■	Regular	960*576	25	71

Figure 4-39


#### 4.6.12 Remote Device

Click , system goes to an interface for you to view remote device information. Please refer to chapter 4.11.1.1.


#### 4.6.13 Network

Click , system goes to the network interface. It is to set network IP address, default gateway and etc. Please refer to chapter 4.11.2.

#### 4.6.14 HDD Manager

Click , system goes to the HDD manager interface. It is to view and manage HDD information. Please refer to chapter 4.11.4.2.

#### 4.6.15 USB Manager

Click , system goes to the USB Manager interface. It is to view USB information, backup and update. Please refer to chapter 4.9.2, chapter 4.10.4, chapter 4.11.5.10, and chapter 4.11.5.12 for detailed information.

### 4.7 USB Device Auto Pop-up

After you inserted the USB device, system can auto detect it and pop up the following dialogue box. It allows you to conveniently backup file, log, configuration or update system. See Figure 4-40. Please refer to chapter 4.9.2, chapter 4.10.4, chapter 4.11.5.10, and chapter 4.11.5.12 for detailed information.



Figure 4-40

## 4.8 Main Menu

The main menu interface is shown as below. See Figure 4-41.

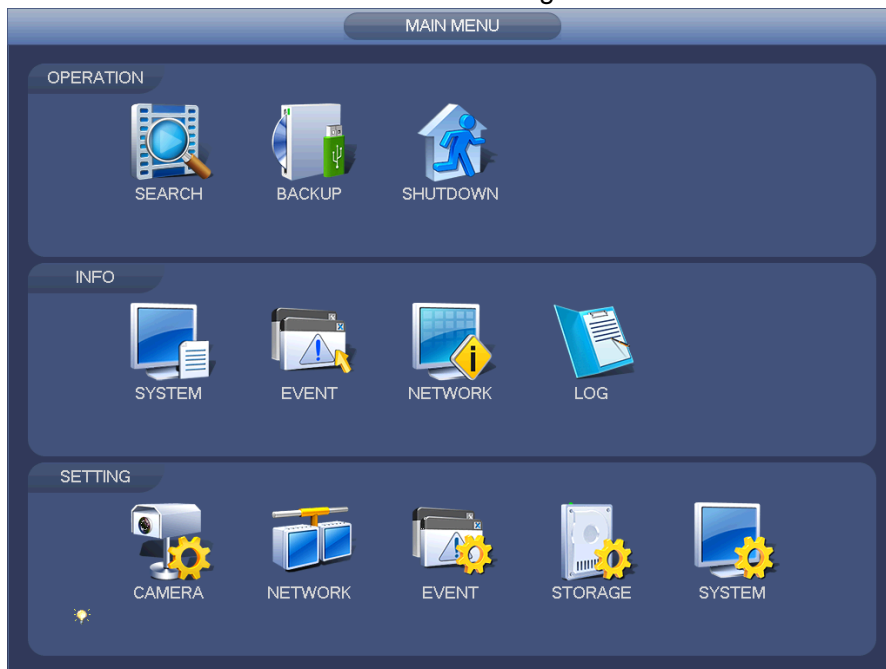


Figure 4-41

## 4.9 Operation

### 4.9.1 Search

Click search button in the main menu, search interface is shown as below. See Figure 4-42.