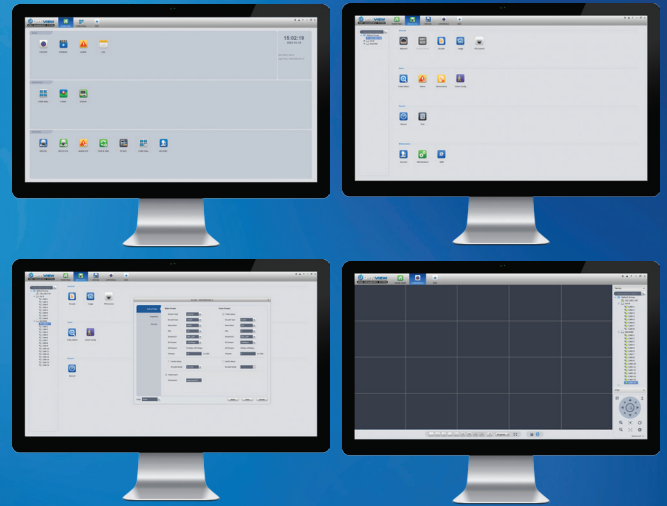


## Optiview VMS

Video Management System

### Features

- Support IP/Megapixel, HD-over-Coax, DVR, NVR, etc.
- Live Preview supports up to 64 (x) 4 Preview Windows; Main/Sub-stream optional
- Auto find/import/export supported
- Manage up to 256 devices (up to 2048 channels)
- 36 channel playback / 64 channel live view / 16 channel record
- On-screen Joystick to control PTZ
- Zoom in/out + Fish-eye camera EPTZ using mouse
- Center alarm for organizing alarm channels
- Support e-map; clearly view & manage all device locations
- Account management supported; different users share different privileges
- Activity Log for event & user operation
- Graphical User Interface for easy operation



Optiview VMS	Windows	MAC
Supported Devices	IP/Megapixel, HD-over-Coax, DVR, NVR	
Max Registered Devices	256 individual IP cameras or video recorders (up to 2048 channels)	
Device Management	Auto find, add, delete, device group; reboot, setup	
Health Report	Device status, alarm info, HDD info	
Video Display Split	1 / 4 / 6 / 8 / 9 / 16 / 25 / 36 or customize split for all versions. 64 only available for Windows.	
Multiple View Screen	4x 64 channel windows	1x 36 channel window
Features	Snapshot, Record, Audio, Talk, Instant Playback, E-PTZ, Tour Task	
PTZ Control	Directions, PTZ, Focus, Iris, Preset, Tour, Pattern; Joystick Control	
Alarm Output Control	Support	
Video Source	Local PC (Manual record or alarm record), Embedded DVR/NVR, IP/Megapixel, HD-over-Coax	
Playback	Up to 24 hours at a time / Up to 36 Channels at a time	
Search Type	Certain time, motion detection, alarm	
Features	Snapshot, E-PTZ, Audio, Speed 1/8x~8x, Synchronization Playback	
Video Back-up	Export as .dav or .avi	Export as .dav
Alarm Features	Schedule alarms, setup actions, operate/memo alarm	
Alarm Type	External alarm, video loss, motion, tampering, disk full or error	
Alarm Actions	Trigger recording, PTZ movement, alarm, popup video	
Number of E-Maps	Map group: Unlimited, Sub-Map, Layout: 64	
E-Map Supports Image Types	JPEG / BMP	
Local Recording	Record up to 16 channels locally	
Device Configuration	Network, encode, PTZ, image, event, record, disk, account, maintenance	
Account	User & Role management; privileges according to module & device	
Log	Client log, remote device log; operation log, system log, alarm log	
System Requirement	CPU: 2 Cores, 3.0GHZ or above Memory: 2G or above; HDD 80G or above	
Operating System	Windows XP / Vista / 7 / 8	OS 10.7 or above
Display Resolution	1024 x 768 and above	

Performance is highly dependent on PC capacity. Recommended configuration is just for reference.