

DVR-C Series: MOBILE VIEWING ON BLACKBERRY

BlackBerry Setting Steps:

1) System requirements

Smartphone OS: 5.0

Supported Models:

CURVE 8900

BOLD 9700

TOUR 9630

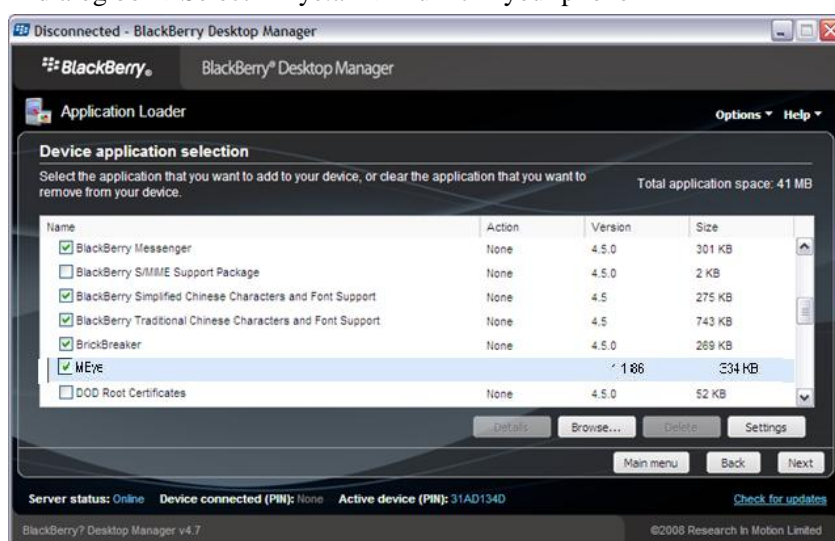
2) Installation

Setup file name: MEye.cod , MEye.alx

a) Using BlackBerry Desktop Manager to setup

Connect the BlackBerry to PC via USB Cable

Run Desktop Manager->Application Loader->Add/delete application->Select the folder in dialog box->Select MEye.alx-> Run it in your phone



b) Using Cod loader to setup

Connect the BlackBerry to PC via USB Cable

Cod Loader and in-phase phone. After that, add cod, install select application, run it.

3) Remove USB Cable, you will see the MEye Icon in desktop->Download



- 4) Run software, GUI as below



- 5) Please do some setting before you begin use it, click Setting-> do parameter setting

Setting

Server info

Name

Address:

Port:

User info

User ID:

Password:

Network info

NetworkType

WIFI

save

cancel

history

Server Address:

DVR public IP address or DDNS

Server Port:

The same number with DVR server port

User ID:

Same as IE user name

Password:

Same as IE password

Network Type:

Select network mode, WIFI or 3G

6) Video display mode

You can switch to normal mode and full-screen mode



General mode



Full-screen mode

7) Keyboard shortcut

PTZ control

- "Q" →up
- "A" →down
- "W" →left
- "S" →right
- "E" →add focus
- "D" →reduce focus
- "R" →add zoom
- "F" →reduce zoom
- "T" →add circle
- "G" →reduce circle
- "space" →capture;