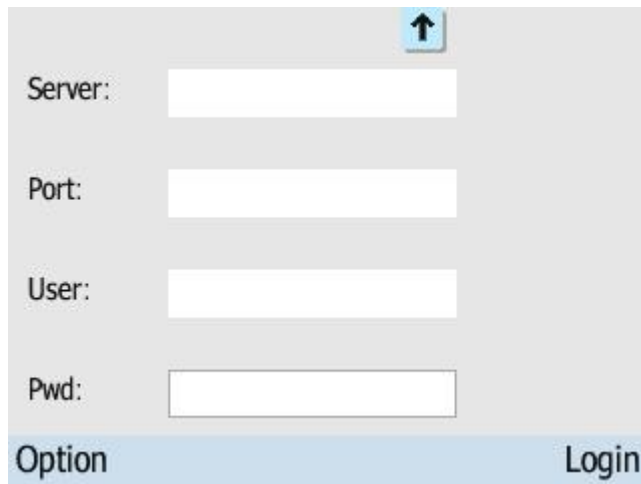


Instructions of Mobile Video Monitoring Software Installation

1. Open the cellular phone Internet browser, input the address of host server, such as <http://hzlonglong.3322.org/mobile.htm> or <http://60.123.233.50/mobile.htm>.
After opening the page, there is a Symbian S60 V3 super link, click on the link can download Symbian S60 V3 operation client program.
2. Install the client directly after the completion of the download.
3. Clicking to mobile video monitoring software.



A screenshot of a login form on a mobile device. The form has a light gray background and a blue bar at the bottom. At the top right, there is a small blue square with a white upward-pointing arrow. Below it are four input fields labeled "Server:", "Port:", "User:", and "Pwd:". The "Server:" field is empty. The "Port:" field is empty. The "User:" field is empty. The "Pwd:" field is empty. At the bottom left of the blue bar is the word "Option" and at the bottom right is the word "Login".

4. Enter server or port address.



A screenshot of the same login form as above, but with the input fields filled. The "Server:" field contains the IP address "60.186.185.202" in green text. The "Port:" field contains the number "7777" in green text. The "User:" field contains the text "admin" in green text. The "Pwd:" field contains six asterisks "*****". The rest of the form, including the blue bar with "Option" and "Login", is the same as in the previous screenshot.

↑

Server:

Port:

User:

Pwd:

Option Login

5、 Enter server.



6、 Choose video channel.

CH 1

CH 2

CH 3

CH 4

CH 5

Option View Camera

7、 After checking the camera, the videos will appear during 2 or 3 seconds.



8、 The screen will appear the shortcut key when pressing OK button in the mobile phone.

9、 The screenshot key will appear after pressing the figure2 key. Under is window the key # is used to screenshot.





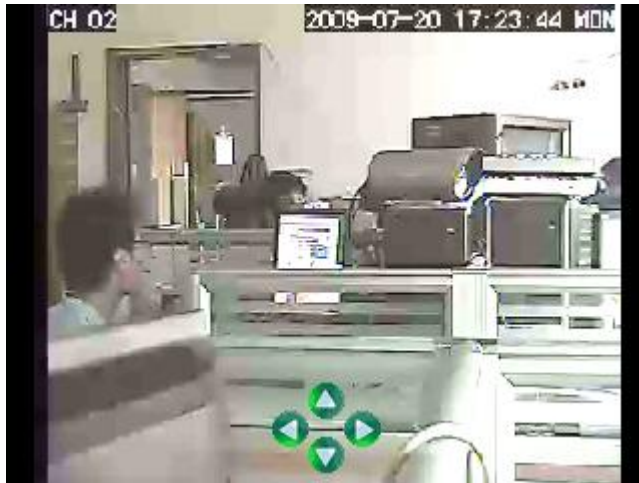
10、 Click OK button will return to preview image interface.



11、 Then click OK again, return shortcut choose interface.



12、 Press numeric keys 3, turn to the passage of the PTZ control. The screen will appear PTZ control icon; the users can only control the camera under this interface.

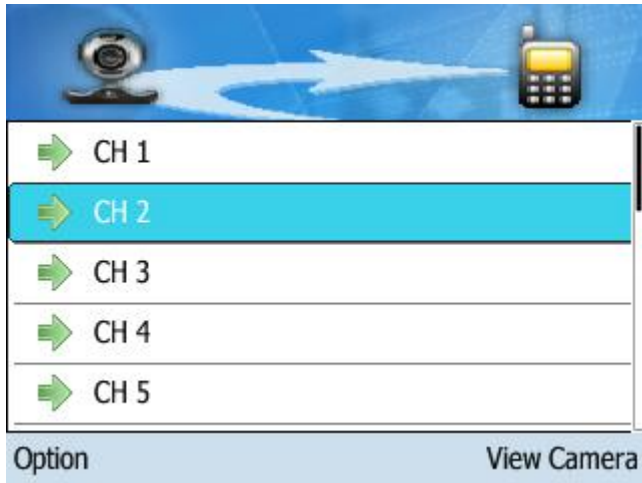


13, Click the OK when the operations is over.

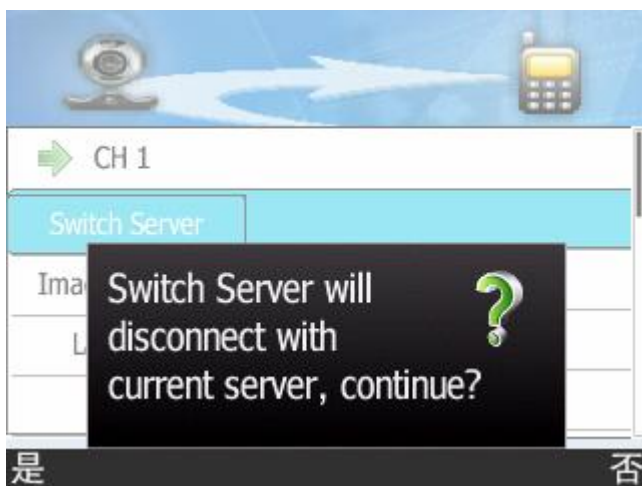
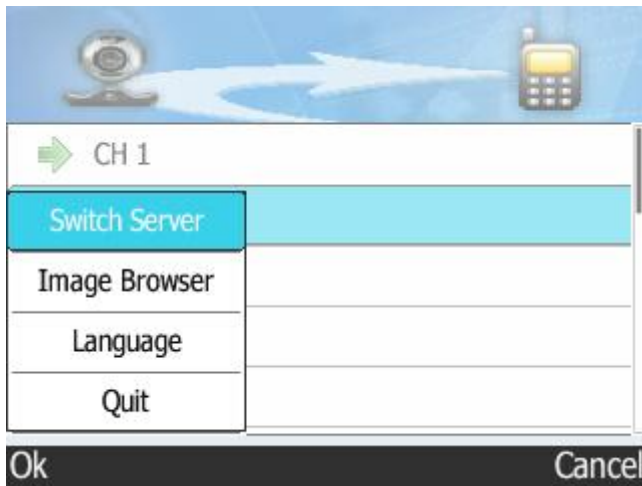


14, Click the OK to shortcut interface if the users want to leave from current channel, press the keyboard right exit.

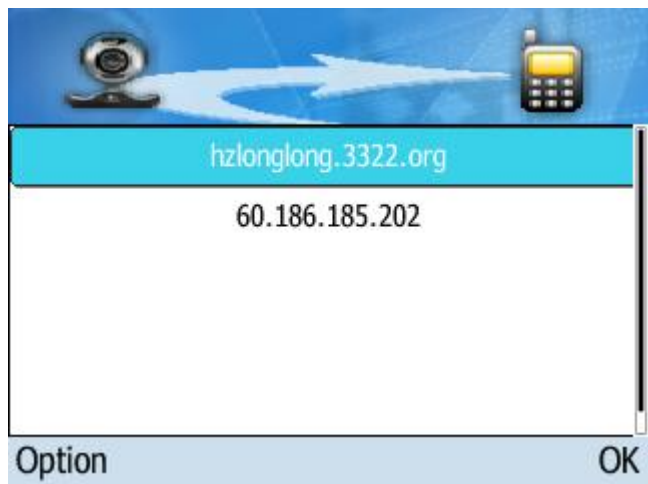




15、 Clicking the keyboard left-click can appear switching server option, switch to other server needs disconnection original server firstly.



16、 Then enter the server and choose the server from the list.

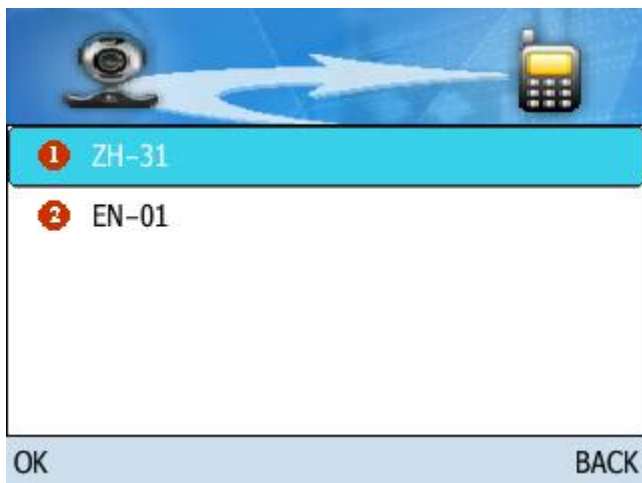
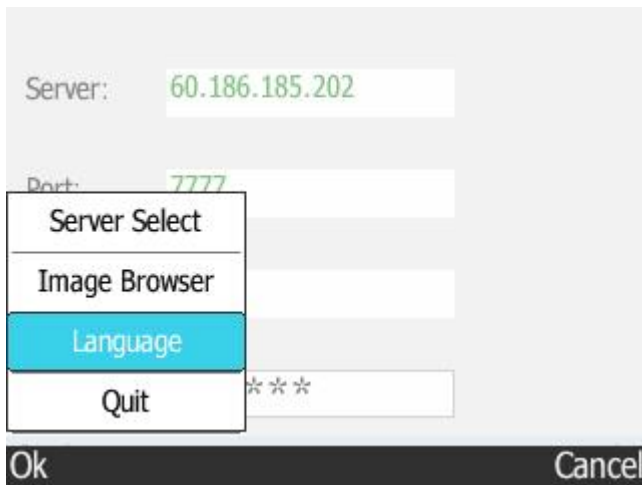


17、 Functions of pictures preview.





18、Functions of the language choose.



19、Exit.

